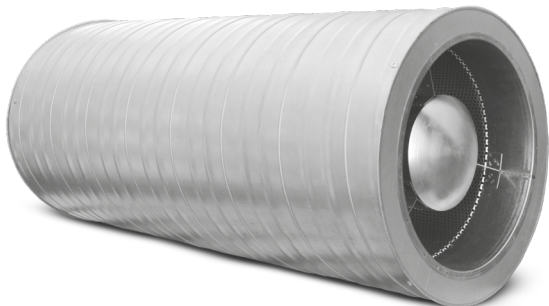


# Round silencers

## SIBROL



### Description

The silencers are delivered with the SPIRAL® system seals in the standard version. The diameter sizes  $d_1 > 315$  mm require ordering the NSL male couplings which need to be installed in the silencer before connecting the silencer to the ductwork. The male fittings are available separately. They are not delivered with the silencers. Rock wool thickness inside the silencer: **50 mm for SIBROL-50** - depends on the outer cladding size. **100 mm for SIBROL-100** - depends on the outer cladding size.

#### Insulation:

Insulation material: rock wool.

Insulation type: trimmed from reel, flexible.

#### Available materials - Product code examples

SIBROL-...-...-... - galvanized steel sheet

SIBROL-K-...-...-... - 1.4301/304 stainless steel sheet

SIBROL-K-...-...-...-316L - 1.4404/316L stainless steel sheet

#### Product code examples

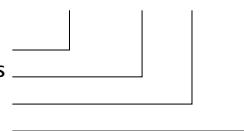
Product code: **SIBROL - iii - aaa - bbb**

type

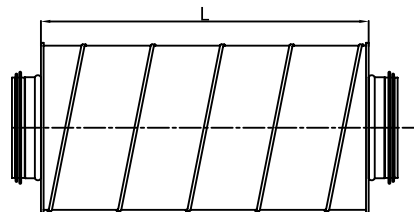
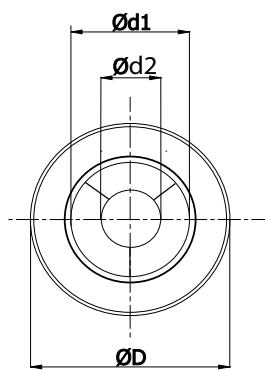
Insulation thickness

$\varnothing d_1$

L

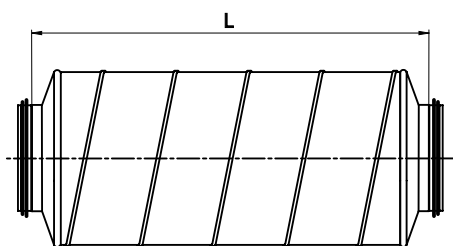
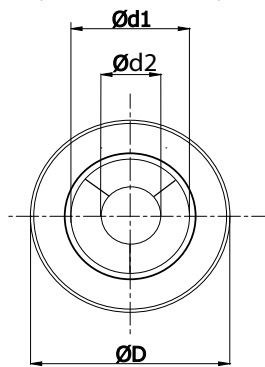


### Dimensions



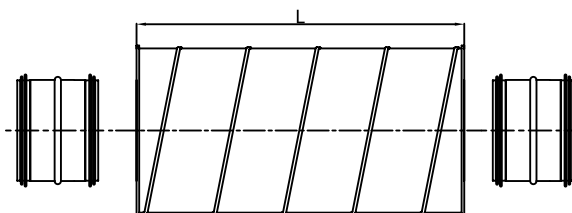
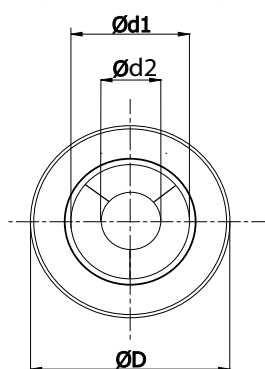
Cross-section for specific types of SIBROL,  $d_1 \leq 315$  mm.

Not applicable to the diameter size:  $d_1$ -250 with 50 mm thick insulation.



Cross-section of SIBROL with 50 mm thick insulation; designed for the diameter size:  $d_1$ -250.

The silencers are fabricated with press-formed covers.



Cross-section for specific types of SIBROL,  $d_1 > 315$  mm.

# Round silencers

## SIBROL

### Dimensions

#### SIBROL-50 - 50 mm insulation

Description	Ød <sub>1</sub> [mm]	D [mm]	Ød <sub>2</sub> [mm]	L [mm]	Weight [kg]
SIBROL-50-224-300	224	315	112	300	3.82
SIBROL-50-224-600	224	315	112	600	7.31
SIBROL-50-224-900	224	315	112	900	10.79
SIBROL-50-224-1200	224	315	112	1200	14.28
SIBROL-50-250-300*	250	355	125	350	4.05
SIBROL-50-250-600*	250	355	125	650	7.72
SIBROL-50-250-900*	250	355	125	950	11.40
SIBROL-50-250-1200*	250	355	125	1250	15.07
SIBROL-50-280-300	280	400	140	300	4.62
SIBROL-50-280-600	280	400	140	600	8.80
SIBROL-50-280-900	280	400	140	900	12.98
SIBROL-50-280-1200	280	400	140	1200	17.15
SIBROL-50-300-300	300	400	150	300	4.81
SIBROL-50-300-600	300	400	150	600	9.13
SIBROL-50-300-900	300	400	150	900	13.45
SIBROL-50-300-1200	300	400	150	1200	17.77
SIBROL-50-315-300	315	400	150	300	5.14
SIBROL-50-315-600	315	400	150	600	9.79
SIBROL-50-315-900	315	400	150	900	14.44
SIBROL-50-315-1200	315	400	150	1200	19.09
SIBROL-50-355-300	355	400	180	300	5.77
SIBROL-50-355-600	355	450	180	600	10.91
SIBROL-50-355-900	355	450	180	900	16.04
SIBROL-50-355-1200	355	450	180	1200	21.18
SIBROL-50-400-300	400	500	200	300	6.18
SIBROL-50-400-600	400	500	200	600	11.61
SIBROL-50-400-900	400	500	200	900	17.05
SIBROL-50-400-1200	400	500	200	1200	22.48
SIBROL-50-450-300	450	560	225	300	8.04
SIBROL-50-450-600	450	560	225	600	15.16
SIBROL-50-450-900	450	560	225	900	22.28
SIBROL-50-450-1200	450	560	225	1200	29.40
SIBROL-50-500-300	500	600	250	300	8.99
SIBROL-50-500-600	500	600	250	600	16.90
SIBROL-50-500-900	500	600	250	900	24.82
SIBROL-50-500-1200	500	600	250	1200	32.73
SIBROL-50-560-300	560	630	280	300	10.07
SIBROL-50-560-600	560	630	280	600	18.85
SIBROL-50-560-900	560	630	280	900	27.62
SIBROL-50-560-1200	560	630	280	1200	36.40

Description	Ød <sub>1</sub> [mm]	D [mm]	Ød <sub>2</sub> [mm]	L [mm]	Weight [kg]
SIBROL-50-600-300	600	710	300	300	10.61
SIBROL-50-600-600	600	710	300	600	19.76
SIBROL-50-600-900	600	710	300	900	28.92
SIBROL-50-600-1200	600	710	300	1200	38.07
SIBROL-50-630-300	630	710	315	300	11.53
SIBROL-50-630-600	630	710	315	600	21.50
SIBROL-50-630-900	630	710	315	900	31.47
SIBROL-50-630-1200	630	710	315	1200	41.44
SIBROL-50-710-300	710	800	355	300	14.91
SIBROL-50-710-600	710	800	355	600	27.63
SIBROL-50-710-900	710	800	355	900	40.36
SIBROL-50-710-1200	710	800	355	1200	53.09
SIBROL-50-800-300	800	900	355	300	16.02
SIBROL-50-800-600	800	900	355	600	29.40
SIBROL-50-800-900	800	900	355	900	42.78
SIBROL-50-800-1200	800	900	355	1200	56.16
SIBROL-50-900-300	900	1000	450	300	18.65
SIBROL-50-900-600	900	1000	450	600	33.16
SIBROL-50-900-900	900	1000	450	900	47.67
SIBROL-50-900-1200	900	1000	450	1200	62.19
SIBROL-50-1000-300	1000	1120	500	300	21.79
SIBROL-50-1000-600	1000	1120	500	600	38.35
SIBROL-50-1000-900	1000	1120	500	900	53.85
SIBROL-50-1000-1200	1000	1120	500	1200	71.46

\*press-formed covers

# Round silencers

## SIBROL

### Dimensions

#### SIBROL-100 - 100 mm insulation

Description	Ød <sub>1</sub> [mm]	D [mm]	Ød <sub>2</sub> [mm]	L [mm]	Weight [kg]
SIBROL-100-224-300	224	450	112	300	5.11
SIBROL-100-224-600	224	450	112	600	9.56
SIBROL-100-224-900	224	450	112	900	14.02
SIBROL-100-224-1200	224	450	112	1200	18.47
SIBROL-100-250-300	250	450	125	300	5.44
SIBROL-100-250-600	250	450	125	600	10.13
SIBROL-100-250-900	250	450	125	900	14.83
SIBROL-100-250-1200	250	450	125	1200	19.52
SIBROL-100-280-300	280	500	140	300	6.12
SIBROL-100-280-600	280	500	140	600	11.36
SIBROL-100-280-900	280	500	140	900	16.60
SIBROL-100-280-1200	280	500	140	1200	21.83
SIBROL-100-300-300	300	500	150	300	6.39
SIBROL-100-300-600	300	500	150	600	11.81
SIBROL-100-300-900	300	500	150	900	17.24
SIBROL-100-300-1200	300	500	150	1200	22.66
SIBROL-100-315-300	315	500	150	300	7.24
SIBROL-100-315-600	315	500	150	600	13.52
SIBROL-100-315-900	315	500	150	900	19.80
SIBROL-100-315-1200	315	500	150	1200	26.07
SIBROL-100-355-300	355	560	180	300	7.96
SIBROL-100-355-600	355	560	180	600	14.65
SIBROL-100-355-900	355	560	180	900	21.34
SIBROL-100-355-1200	355	560	180	1200	28.03
SIBROL-100-400-300	400	600	200	300	8.81
SIBROL-100-400-600	400	600	200	600	16.13
SIBROL-100-400-900	400	600	200	900	23.45
SIBROL-100-400-1200	400	600	200	1200	30.76
SIBROL-100-450-300	450	630	225	300	10.31
SIBROL-100-450-600	450	630	225	600	18.77
SIBROL-100-450-900	450	630	225	900	27.23
SIBROL-100-450-1200	450	630	225	1200	35.69
SIBROL-100-500-300	500	710	250	300	11.03
SIBROL-100-500-600	500	710	250	600	19.89
SIBROL-100-500-900	500	710	250	900	28.76
SIBROL-100-500-1200	500	710	250	1200	37.63
SIBROL-100-560-300	560	800	280	300	12.77
SIBROL-100-560-600	560	800	280	600	22.95
SIBROL-100-560-900	560	800	280	900	33.12
SIBROL-100-560-1200	560	800	280	1200	43.30

Description	Ød <sub>1</sub> [mm]	D [mm]	Ød <sub>2</sub> [mm]	L [mm]	Weight [kg]
SIBROL-100-600-300	600	800	300	300	13.54
SIBROL-100-600-600	600	800	300	600	24.18
SIBROL-100-600-900	600	800	300	900	34.82
SIBROL-100-600-1200	600	800	300	1200	45.46
SIBROL-100-630-300	630	800	315	300	14.05
SIBROL-100-630-600	630	800	315	600	24.97
SIBROL-100-630-900	630	800	315	900	35.89
SIBROL-100-630-1200	630	800	315	1200	46.82
SIBROL-100-710-300	710	900	355	300	16.50
SIBROL-100-710-600	710	900	355	600	28.64
SIBROL-100-710-900	710	900	355	900	40.78
SIBROL-100-710-1200	710	900	355	1200	52.92
SIBROL-100-800-300	800	1000	355	300	18.90
SIBROL-100-800-600	800	1000	355	600	32.52
SIBROL-100-800-900	800	1000	355	900	46.15
SIBROL-100-800-1200	800	1000	355	1200	59.77
SIBROL-100-900-300	900	1120	450	300	23.57
SIBROL-100-900-600	900	1120	450	600	38.86
SIBROL-100-900-900	900	1120	450	900	54.15
SIBROL-100-900-1200	900	1120	450	1200	69.45
SIBROL-100-1000-300	1000	1250	500	300	27.33
SIBROL-100-1000-600	1000	1250	500	600	44.19
SIBROL-100-1000-900	1000	1250	500	900	58.94
SIBROL-100-1000-1200	1000	1250	500	1200	77.91