

# Prefabricated components for aluminium air intake and exhaust units

## **CSQ-A-PREF/ WSQ-A-PREF / WSOQ-A-PREF**



### **Description**

The prefabricated components of louvre air intake and exhaust units are made entirely from cast aluminium. These kits allow shop and on-site fabrication of air intake and exhaust units of any size. The thick sheet walls allow building large units which are rigid and light in weight.

#### **Available materials — Product code examples**

...-... - aluminium sheet

#### **Product code example**

Product code:

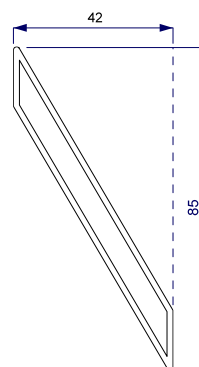
**QCA-BLADE-P**

type \_\_\_\_\_

### **Dimensions**

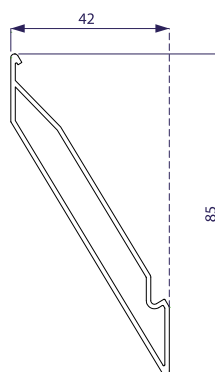
#### **QCA-BLADE-P**

Profile aluminium blade for air intake / exhaust louver.  
Sold in units of 6 metres



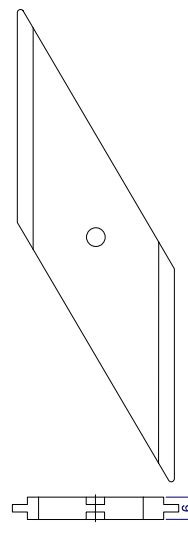
#### **QCA-BLADE-PW**

Profile aluminium blade for air intake / exhaust louver with a water slot. Sold in units of 6 metres.



#### **QCA-SPACER**

Universal separator made of plastic for aluminium louver.



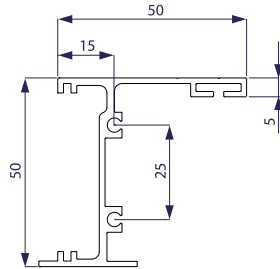
# Prefabricated components for aluminium air intake and exhaust units

## CSQ-A-PREF/WSQ-A-PREF

### Dimensions

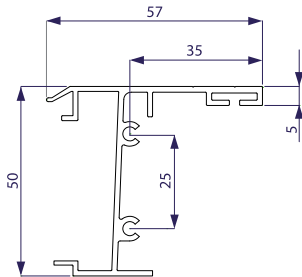
#### QCA-FRAME-P

Side shaft aluminium shaft for louver.  
Sold in units of 6 metres.



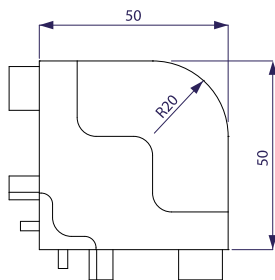
#### QCA-END-P

Aluminium closing blade for louver.  
Sold in units of 6 metres.



#### QCA-COR

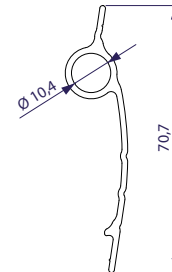
Aluminium corner for louver.



Additionally, for the air exhaust WSOQ-A you will need:

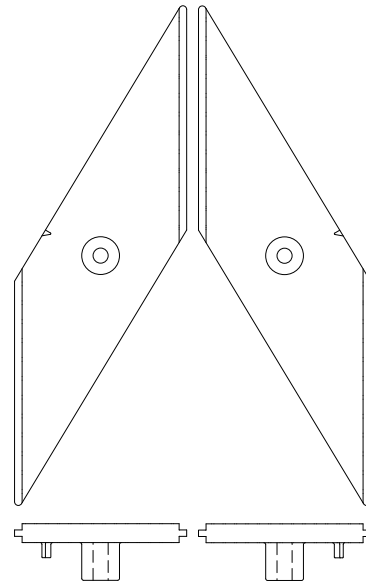
#### QCA-BLADE-OP-P

Profile blade of the one way louver.  
Sold in units of 6 metres.



#### QCA-SPACER-OP-L / QCA-SPACER-OP-R

Left or right plastic separator for aluminium one way louver.



#### QCA-MASK

Aluminium profile masking body for air exhaust louver.  
Sold in units of 6 metres.

